

SAMPLING METHODS
SM18 - Version 01

1

REQUIRED EQUIPMENT

- ✎ Sterile sampling pot.
- ✎ Examination gloves.
- ✎ Cleaning wipe (not included).
- ✎ Disinfectant wipe.
- ✎ Absorbent paper (not included).
- ✎ Permanent marker (not included).
- ✎ Insulated bag and instant cold pack.

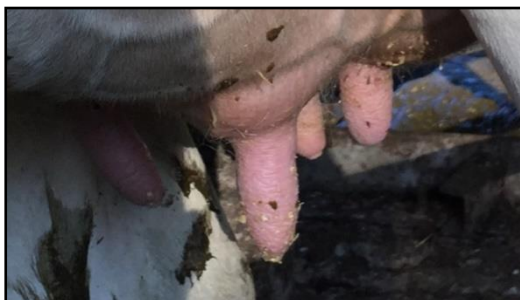
The sample must be accompanied by a submission form.

2

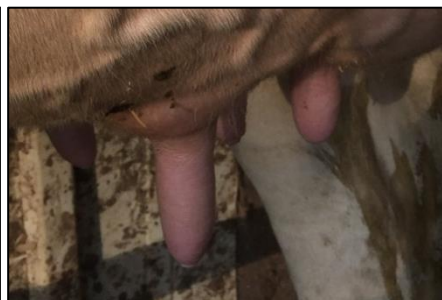
CLEANING AND DISINFECTION METHODS

Milk should be collected at the start of milking to ensure the highest concentration of bacteria. The teat must be properly cleaned and disinfected to prevent contamination from skin or environmental bacteria. If sampling multiple quarters from the same cow, always start with the farthest quarters.

- ✎ Clean the teat with a cleaning wipe and dry with absorbent paper. Repeat until the paper remains clean. Once clean, put on gloves.
- ✎ Disinfect the teat thoroughly, focusing on the sphincter, using a disinfectant wipe.



Before cleaning



After cleaning



Disinfection

3

SAMPLING METHODS

- ✎ Loosen the cap of the sterile sampling pot.
- ✎ Discard the first few streams of milk onto the ground.
- ✎ Hold the cap in the gloved hand.
- ✎ Collect two or three streams of milk into the sampling pot, held at an angle. A small amount is sufficient for analysis.
- ✎ Immediately close the pot securely.
- ✎ Label the sample clearly with the animal No., quarter sampled, and date using a permanent marker.
- ✎ Store the sample at 4–8 °C if shipping and culture occur within 48 hours (do not freeze).



4

PACKAGING AND TRANSPORTATION OF SAMPLES TO THE LABORATORY

It is recommended to send samples the same day, as Gram-negative bacteria counts may decrease after freezing.

- ✎ Place the sample in an insulated bag.
- ✎ Shake the instant cold pack vigorously to mix the components well.
- ✎ Activate the cooling by applying pressure to the pack.
- ✎ Seal the insulated bag.
- ✎ Pack the insulated bag inside a box along with the submission form.
- ✎ Securely tape the box.



KEY POINTS

1. Clean the teat thoroughly until the absorbent paper remains clean, then disinfect.
2. Collect milk at the start of milking, taking two or three streams into the tilted pot.
3. Store immediately at 4–8 °C if tested within 48 hours.
4. Do not freeze the sample.
5. Deliver to the laboratory as soon as possible.